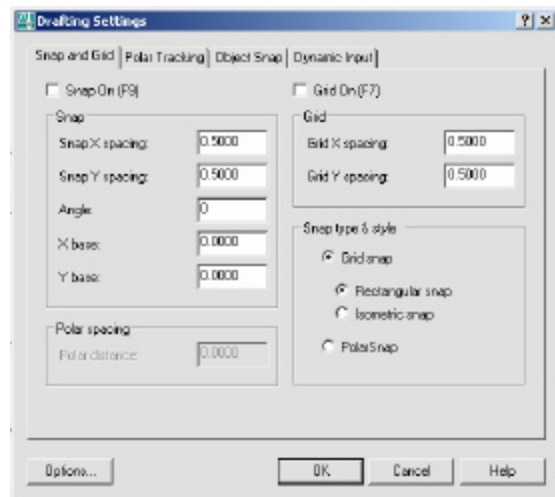

Chapter 6
Drawing Aids

AutoCAD 2D Tutorial

6.1 SNAP Command

1. **Choose** Tools, Drafting Settings...
or
2. **Type** SETTINGS at the command prompt.
Command : **DSETTINGS**
or
3. **Type** SNAP at the command prompt.
Command: **SNAP or SN**
4. **Type** One of the following options: Snap spacing or ON/OFF/Aspect/Rotate/Style<1000>:



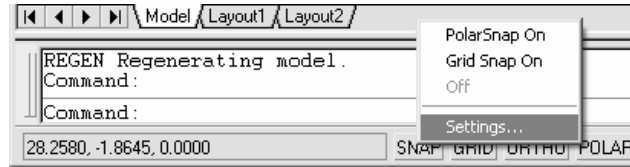
Turn Snap On/OFF

1. **Press** Function Key **F9** to turn the snap ON/OFF.
or
2. **Double Click** SNAP on the Status Bar.
or
3. **Press** CTRL + B.

AutoCAD 2D Tutorial

TIP:

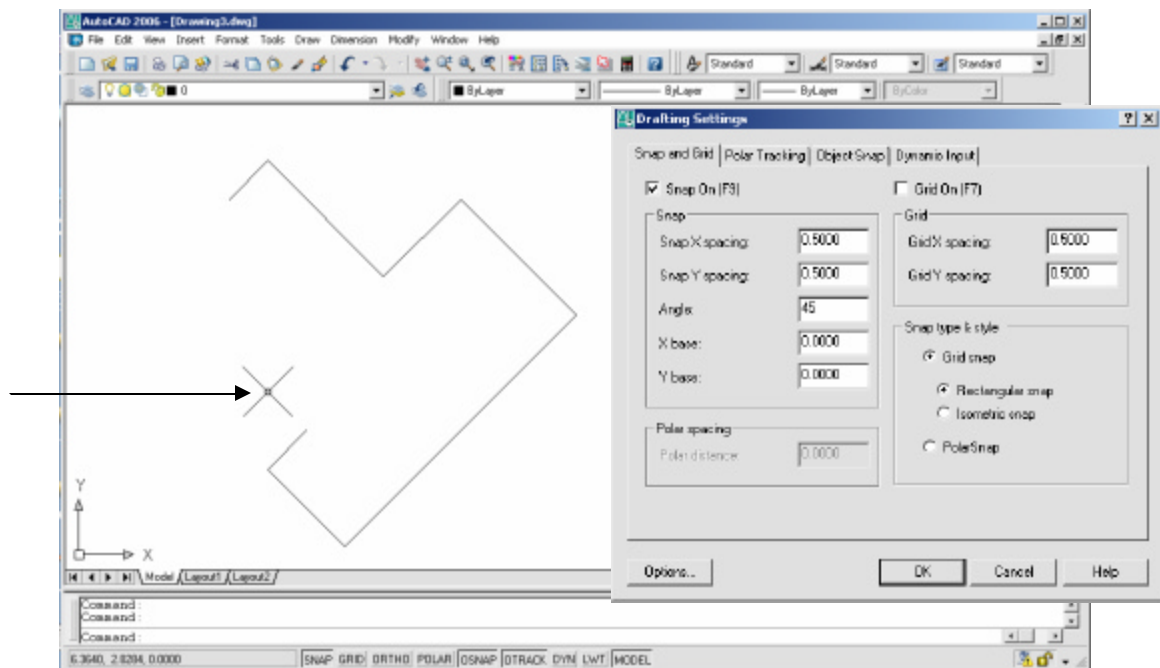
Click with the right mouse button on the SNAP option from the status bar as a shortcut to changing the snap settings.



SNAP Angle

1. **Choose** Tools, Drafting Settings...
or
2. **Type** DDSETTINGS at the command prompt.
Command : DDSETTINGS (DS)
or
4. **Type** SNAP at the command prompt.
Command: **SNAP** or **SN**
5. **Type** One of the following options:
Snap spacing or ON/OFF/Aspect/Rotate/
Style<1000>: **R**

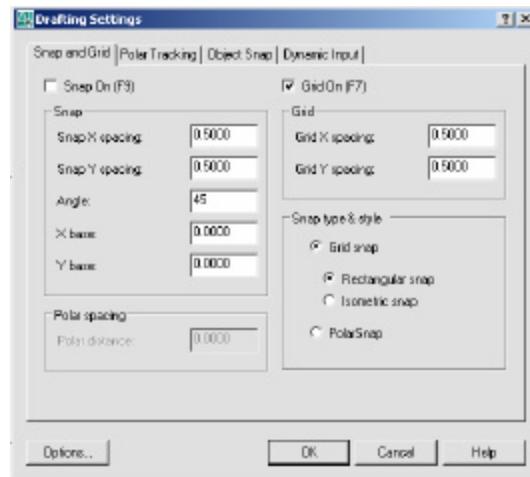
*Lines drawn
with a cursor at
a
45 degree
angle*



AutoCAD 2D Tutorial

6.2 Grid Command

1. **Choose** Tools, Drafting Settings...
or
2. **Type** DSETTINGS at the command prompt.
Command : DSETTINGS (DS)
or
3. **Type** GRID at the command prompt.
Command: **GRID**
4. **Type** One of the following options:
Grid spacing(X) or ON/OFF/Snap/Aspect
<0000>:



Turn Grid On/Off

1. **Press** Function Key **F7** to turn the grid ON/OFF.
or
2. **Double Click** GRID on the Status Bar.
or
3. **Press** CTRL + G.

TIP:

Set the GRID spacing to zero (0) to match the SNAP settings.